



MOST SUCCESSFUL DEVELOPMENT

PRESENTS

BRANDED CELEBRITY DESIGNER VILLAS

ADORNED BY INDIA'S INTERNATIONAL DESIGN ICON

STARTING AT ~~₹3.99 CR+~~ ₹3.39 CR+

SPECIAL BULLET 20:30:50 PAYPLAN#

60 mins from SoBo by sea & road*

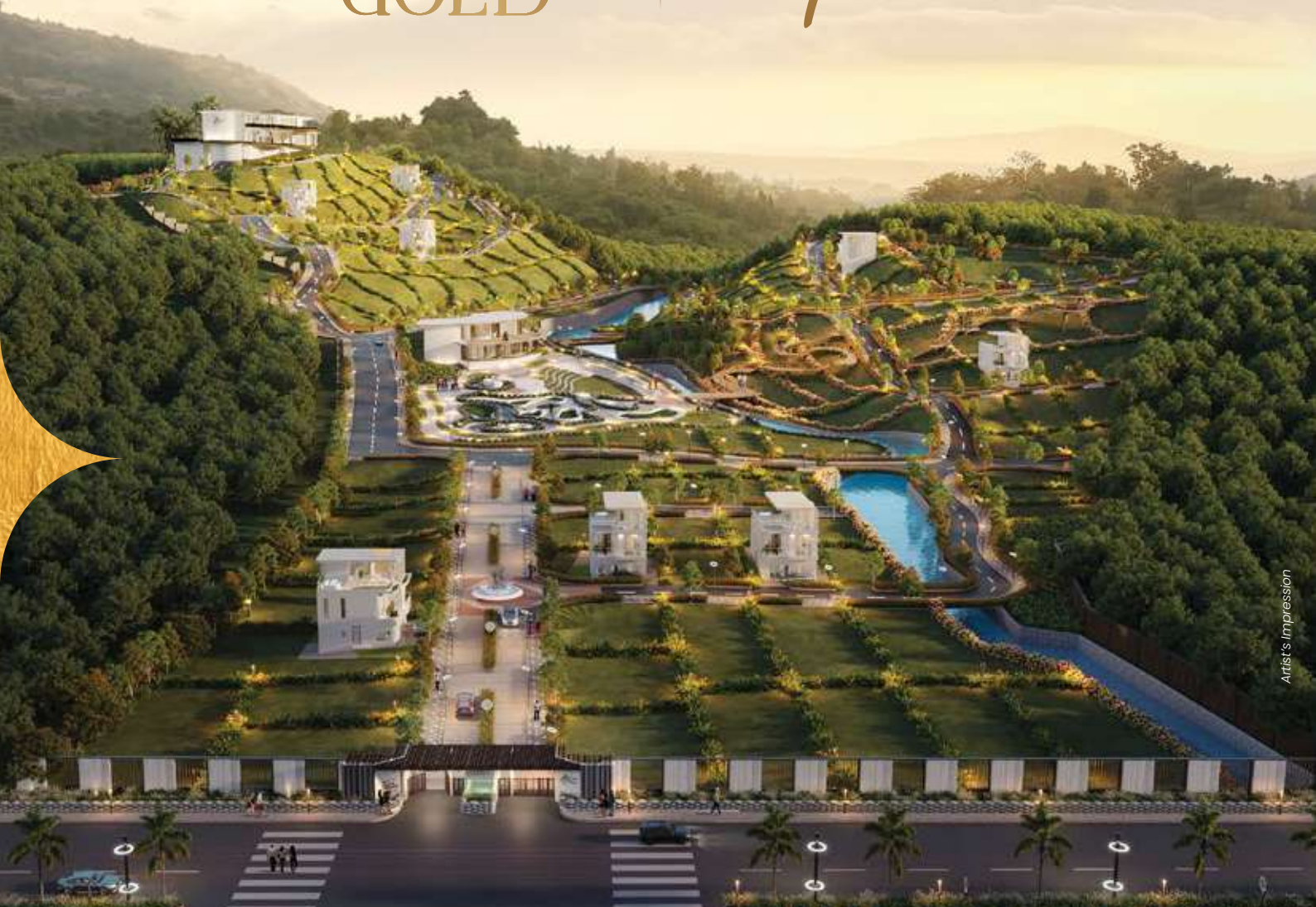
THE BIGGEST REAL ESTATE STORY OF ALIBAUG

ALREADY CHOSEN BY MORE THAN 100+ ELITE FAMILIES LIKE YOU

2 SUCCESSFUL LAUNCHES

CODENAME
land of
GOLD

A
ALIBAUG



Artist's Impression

20-Acre Gated Community | India's 1st Signature Land Development

*Explore the breathtaking coastal cliffs of Alibaug, where unparalleled infinity vistas
& opulent experiences await the discerning*



CRAFTED BY MUMBAI'S ARCHITECTURAL LEGENDS:

- Developed by the pioneers of land in collaboration with Talati and Partners: one of Mumbai's most esteemed architectural firms
- Spread across 20+ acres (80,937 sq. m.+) of pristine contoured landscape escalating to a height of above 400 ft. From the ground level
- Immerse yourself in resort living accompanied by over 20 meticulously curated concierge services
- Embark on an international lifestyle enriched with more than 40 tailored amenities
- Discover Alibaug's only Destination Restaurant Indigo Delicatessen inside the premises





THE DESTINATION'S MOST LUXURIOUS LIFESTYLE

Graced by not just one but two magnificent clubhouses



Club Allure stands as an extraordinary focal point within the development, rightfully claiming the spotlight for unparalleled family experiences. Boasting a vast indoor-outdoor setting and a sprawling recreational expanse exceeding 65,000 sq. ft. (6,039 sq. m./ 1.5 acres) – It is the showstopper at the epicenter of the development.

Club A beckons Alibaug's elites, being at the vantage point of the development, ~500 ft. high. With a whopping infinity pool, an international fitness center, squash courts, and more; the 70,000 sq. ft. (6,503 sq. m./ 1.61 acres) of club and expansive greens truly redefine opulence.



THE
HOUSE OF
ABHINANDAN
LODHA

.....
Collaborated With
.....

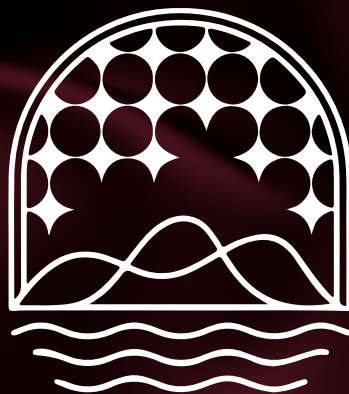


TALATI & PARTNERS LLP.

To Bring Alive India's 1st Signature Land Development

ADDING A NEW DIMENSION TO CELEBRITY VILLA LIVING

U N V E I L I N G



VILLAE MONT

ALIBAUG'S ONLY CLIFF-COUTURE LIVING

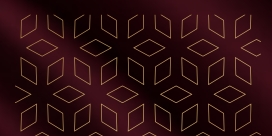
ADORNED BY INDIA'S INTERNATIONAL DESIGN ICON



DESIGN ETHOS INSPIRED
BY THE PACIFIC COAST



A UNIQUE MIX OF QUIET
LUXURY + EDGY CHIQ





ELEGANCE COUPLED WITH EFFICIENCY



3 bhk villas with curvilinear design



Superior marble flooring



Multiple decks to relish scenic views



Private jacuzzi



Expansive terrace space



International brand fittings

- A Space calibrated for 3 families to simultaneously reside in and enjoy
- Ground floor designed as an indoor-outdoor party expanse: hosting 40+ people
- Ascend to the first floor, where exclusive areas create a private sanctuary
- Terrace designed as a relaxing haven with open-to-sky jacuzzi & bar



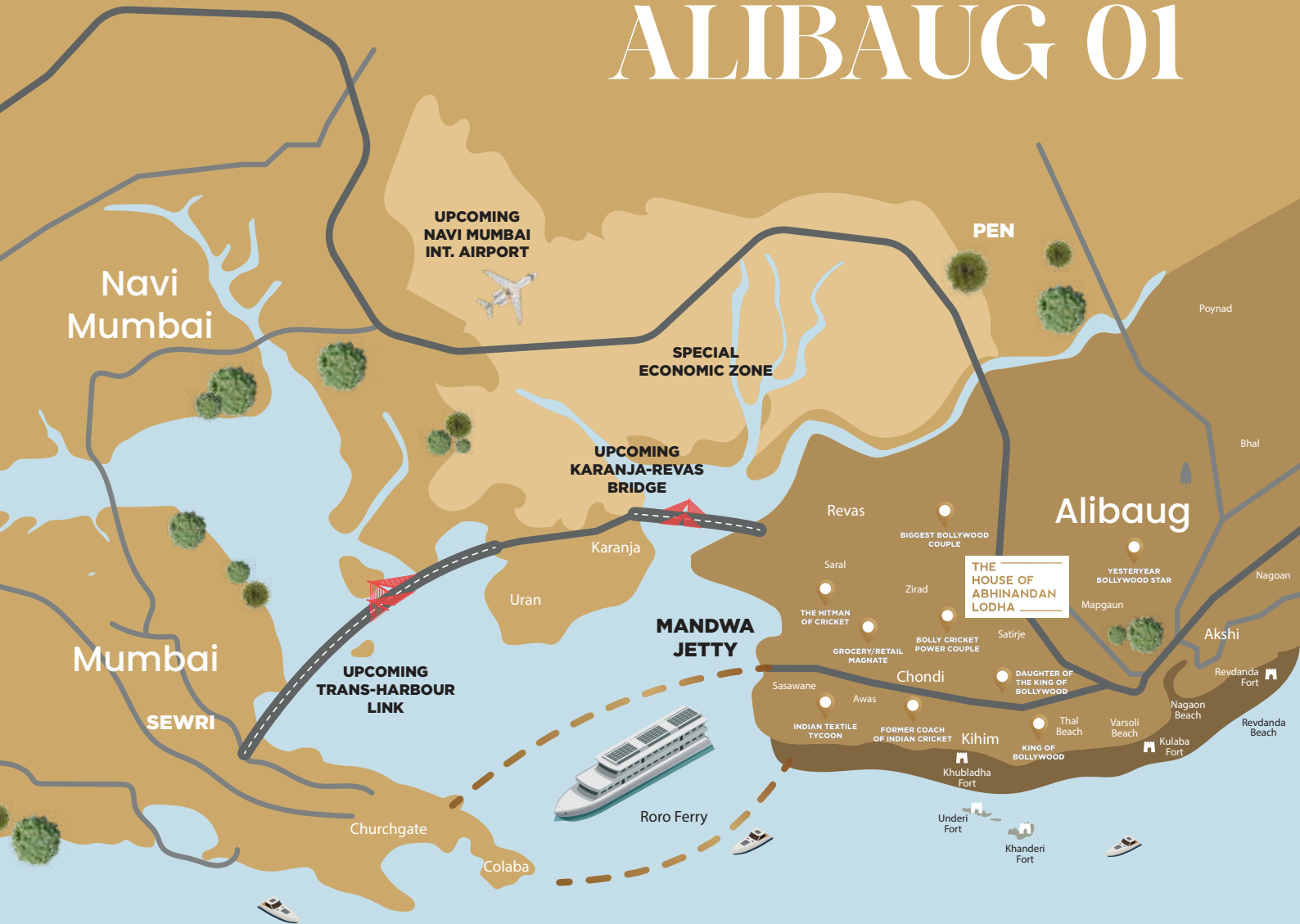
MMR'S FINEST ALLURE. WHY CHOOSE ANYTHING ELSE NOW?

A Comparative Exploration Of Maharashtra's Top Location For A Second Home

	Connectivity to Mumbai	Connectivity to Airport	Appreciation Potential	Social Infrastructure	Tourism Value
ALIBAUG	Within 60 mins	30 mins	2X Growth in 5 Years*	Developed	Yearlong
LONAVALA	3 Hrs by Road	90 mins	Saturated	Moderately Developed	Highly Seasonal (Only During Monsoons)
IGATPURI	3 Hrs by Road	More than 3 Hrs	Medium	Moderately Developed	Highly Seasonal (Only During Monsoons)
MAHABALESHWAR	6 Hrs by Road	More than 3 Hrs	Medium	Moderately Developed	Seasonal (Summer & Monsoons)



GRACE THE PINCODE OF THE ELITES: ALIBAUG 01



18 mins by Speedboat



50 mins by RoRo ferry (Additional RoRo to be added)



90 mins by Road

SCAN TO EXPLORE
THE SCENIC VIEWS
FROM YOUR WINDOW





ALIBAUG THE CELEBRITY CAPITAL OF MMR

60 MIN FROM SOBO ~BY LAND AND SEA



UPCOMING MUMBAI TRANS HARBOR LINK:

Post January 2024, the road travel time cuts down to 1.5 hours



UPCOMING NAVI MUMBAI INT. AIRPORT:

Reach Alibaug in less than 1 hour from the airport post 2024



UPCOMING MUMBAI MARINA :

India's second marina along the Princess dock area



UPCOMING KARANJA REVAS BRIDGE:

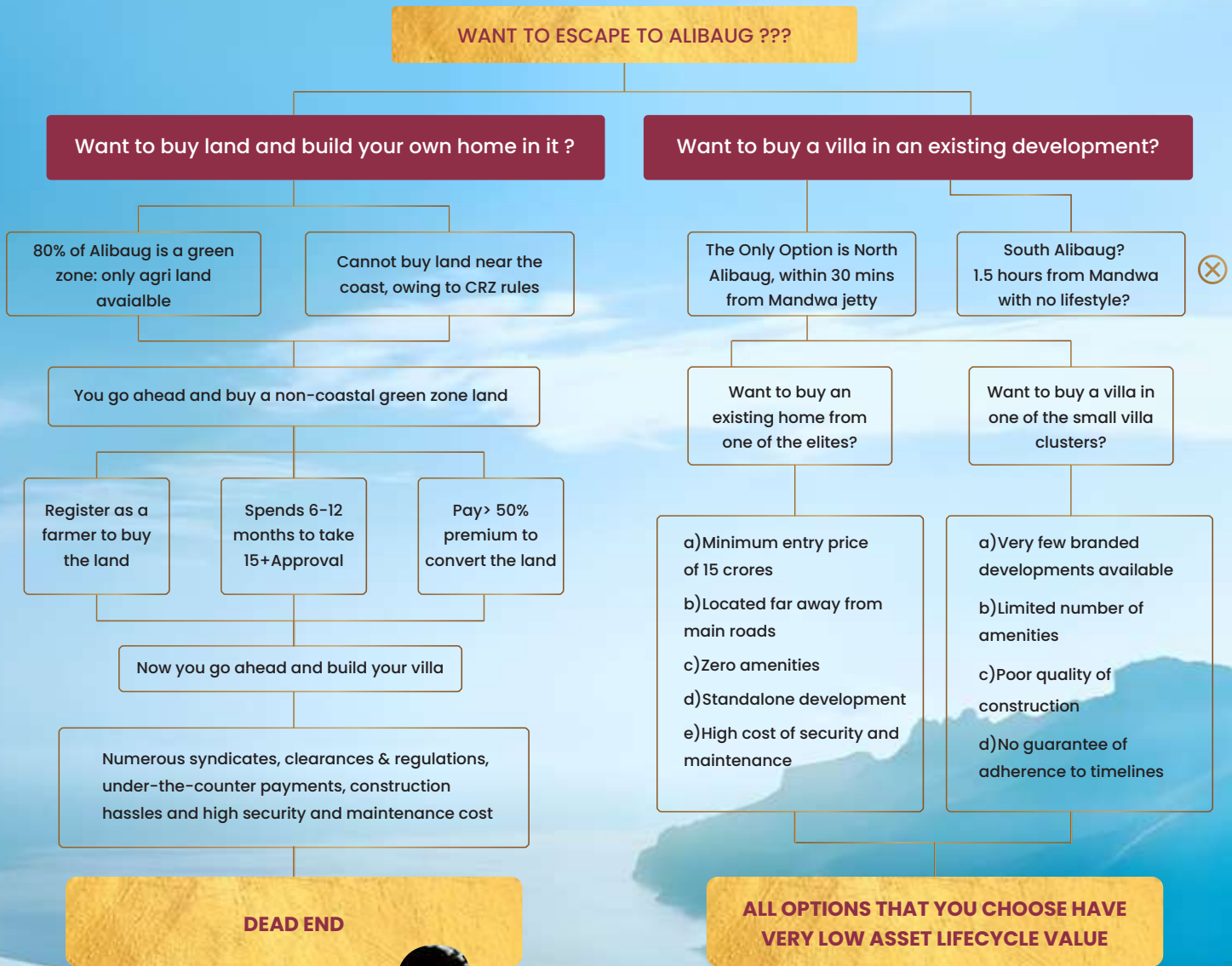
Reach Alibaug from SoBo in less than 1 hour, post 2025



With such myriad infrastructural development,
Alibaug is set to witness an appreciation of upto 2x within the next 5 years



A REVERED SANCTUARY, ENGULFED IN A REVERIE OF DOLDRUMS



Representative Image



Shah Rukh Khan's daughter Suhana Khan declared herself as agriculturist to buy Alibaug farmland for ₹12.91 cr*

*Source : Livemint.com, 23rd June 2023

WE ARE THE SOLUTION

This is your most efficient way of owning a branded villa in the celebrity capital of MMR with



Designer Aesthetics



Resort Style Lifestyle



Luxury Brand Fittings



Elite Community Living



Maximum Value

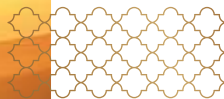


Most Effective Price

The Biggest Shift In Mumbai's Elite Address Is Here

Away from the hassles of city life, yet accessible within an hour. This is not just a vacation home, but a purpose-built every weekend destination. And not just for the nuclear family, but a festive space for the greater family


This is Mumbai's Biggest Opportunity for Co-Primary Living, Just an hour away from SoBo

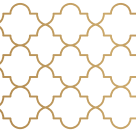




MASTERS OF LUXURY LIVING

Success That Echoes Across India & Abroad

-  3000+ Delighted Customers
-  7 Million Sq. Ft. Sold (0.65 Million Sq. m.)



***** WRAPPED IN OUR PROMISES, YOUR BATON OF WEALTH *****



The pledge of security



The bond of transparency



The symbol of wealth



The hallmark of honour

***** A STRING OF PROJECTS WHICH HAVE BEEN LANDMARK SUCCESSES *****

TOMORROW'S LAND

An epic land shopping festival at Anjarle that saw:
3x subscriptions 1200+ applicants

ISLE OF BLISS

A massive **110%** appreciation at Dapoli: **₹450 per sq.ft.(₹41.8 per sq. m.)** in Aug 2020 grew to **₹950 per sq.ft.(₹88.3 per sq. m.)** in Oct 2022



A giant imprint of triumph on the Goan shores: **A sell-out launch in less than 100 hours**



The Biggest Launch Of Goa's Last Coastal Land : Sold Out Within **Just 2 Weeks** From The Launch With A Whooping **300+ Families Across India** Choosing To Own Land Here.

THE HOUSE OF ABHINANDAN LODHA

Correspondence address: 3rd floor, Lodha Excelus, Apollo Mills Compound, NM Joshi Marg, Mahalakshmi, Maharashtra 400 011



www.hoabl.in



The House Of Abhinandan Lodha



[thehouseofabhinandanlodha](https://www.instagram.com/thehouseofabhinandanlodha)



The House of Abhinandan Lodha is India's premier independent consumer-tech brand born out of a vision to democratize land for the new generation of the country. Disclaimer: Project "A' Alibaug" is registered in two phases with MahaRERA under registration nos. 'A' Alibaug Phase 1: P52000049721 and A Alibaug Phase 2: P52000052368, available at <https://maharera.mahaonline.gov.in/>. The common areas and amenities are common and to be shared by purchasers of all phases of the Project. Sale is subject to the terms of application form, agreement for sale and other documents to be executed between the parties. All images, information, drawings and sketches are for representation purposes only unless otherwise stated. #All future developments and infrastructure facilities to be provided by third parties, municipal authorities and are subject to approvals. Distance and timelines are indicative and may vary subject to weather, transport and infrastructure facilities to be provided. **Data collected is indicative in nature and presented from online websites like 99acres.com, housing.com and magicbricks.com. It is solely under the discretion of the reader to interpret the data | *Terms and Conditions Apply | For more information, please contact The House of Abhinandan Lodha Private Limited. Correspondence address: 3rd floor, Lodha Excelus, Apollo Mills Compound, NM Joshi Marg, Mahalakshmi, Maharashtra 400 011.